

# Shiny Jammer

Channel your inner badass with this roller derby-inspired hat. It's knit in the round with a simple ribbed cuff and decreases on the crown. The stars are added using the duplicate stitch after the hat is knit up. Knit this super simple hat in the colors of your favorite roller derby team to show your spirit. And don't forget: skate fast, turn left, and hit hard!

## Materials

Main Color: Paton's Classic Wool Worsted-Lime Green (about half a skein)

Contrast Color: Paton's Classic Wool Worsted-Black (several yards)

Size 8 12- or 16-inch circular needle

Size 8 double-pointed needles

Tapestry needle

Scissors



## Sizes

Adult Small, Adult Large

## Instructions

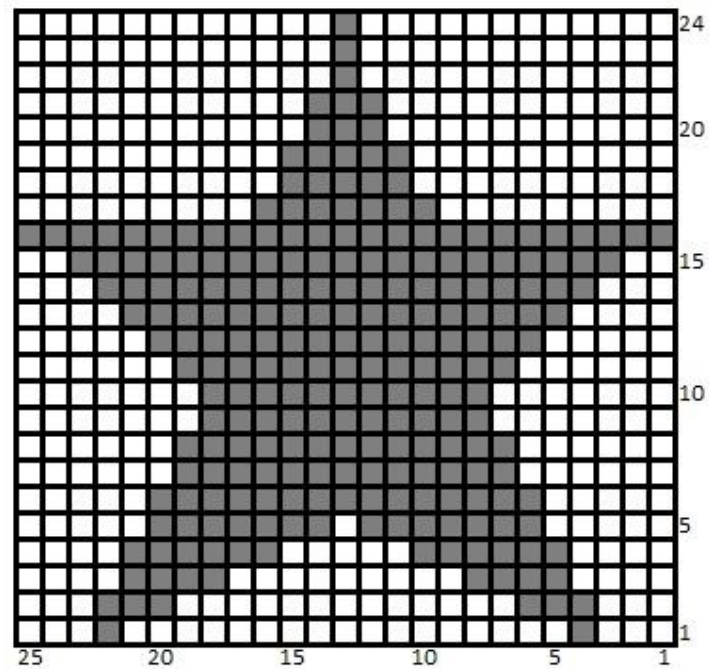
Cast on 80 stitches for small size, or 88 stitches for the large size onto the circular needle

- Place marker, k2p2 around. Work in pattern for 5 rows.
- Knit all stitches (stockinet stitch) until your knitting measures 5 inches from the cast on edge.
- *Large Size only:* [k9, k2tog] 8 times. Knit two rows even.
- Both sizes are the same from now on, changing to double-pointed needles as needed.
- [k8, k2tog] 8 times. Knit two rows even.
- [k7, k2tog] 8 times. Knit two rows even.
- [k6, k2tog] 8 times. Knit one row even.
- [k5, k2tog] 8 times. Knit one row even.
- [k4, k2tog] 8 times. Knit one row even.

- [k3, k2tog] 8 times. Knit one row even.
- [k2, k2tog] 8 times.
- [k1, k2tog] 8 times.
- [k2tog] 8 times.

Cut tail and thread the end through the remaining loops. Weave in ends.

Add the stars using the contrast color yarn with duplicate stitch. Position them on opposite sides of the hat, starting on the second row from the ribbing.



Questions? Comments? Mistakes? Just want to say Hi? Contact me through my blog: [www.ontheneedles.com](http://www.ontheneedles.com), or via email: [knittingonthe needles@gmail.com](mailto:knittingonthe needles@gmail.com)

© 2013 Allison Griffith